

**Richard Felciano**

**V A C**

**A Creation Myth**

**for  
contralto, clarinet, violin, cello & piano**

**for the Ensemble Bartók of Santiago  
Alfonso Letelier *In Memoriam***

# Performance Instructions - 1

## General

The clarinet is written in C in the score but transposed in the part.

Accidentals are valid through the measure and across bar-lines when tied.

NV = no vibrato

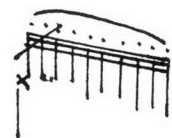
vib. = with vibrato

  dim. to / cresc. from nothing (niente)

All glissandi are measured, moving *immediately* away from the starting pitch; judge the speed so as to arrive at the target pitch at the indicated rhythmic position.

Crescendo and diminuendo indications are carefully measured and must be rhythmically precise

## Strings



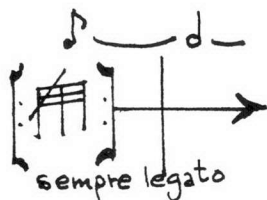
ricochet of bow; usually up-bow, produces skittish bouncing



each ↑ a quarter-tone higher than the preceding note

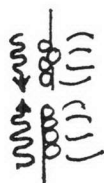
 pont. =

move gradually to sul ponticello; increase harmonic (and noise) elements as you go



as legato and as fast as possible; repeat the group but do not re-phrase with each repetition. The small notes above the staff indicate the duration of the repetitive figure in the brackets, the entire figure being played as an unbroken slur

## Piano



arpeggios in opposite directions.

LV = let vibrate

Ped.  = hold down until \*

Ped. I = damper pedal (default; use if no pedal number indicated)

Ped. II = sostenuto pedal

Ped. III = una corda (soft) pedal

lift hand = raise hand immediately away from keys after striking. Used in conjunction with damper pedal depression, this increases piano resonance.

## Performance instructions - 2

### E-flat Clarinet

A Neoprene (Rovner) ligature is suggested to dull the high harmonics of the Eb clarinet and help to produce the desired pure, "white," child-like tone. An alternate method consists of attaching the reed to the clarinet by winding both with jewelers' watch-string (the kind used for ladies' watchbands) impregnated with wax.

### Voice

#### IPA symbols

m	<u>m</u> adre (hum)	
ʊ	l <u>u</u> z	m <u>oo</u> n
o	ó <u>p</u> era	r <u>o</u> se
ɑ	f <u>a</u> ther	m <u>a</u> dre
i	m <u>ee</u> t	h <u>i</u> jo
ɛ	b <u>e</u> d	b <u>e</u> lla
e	parl <u>e</u>	g <u>e</u> ben

♩ = 84

8

Bb clar.

6/4

5/4

2/4

4/4

NV sim.

mf

(mp)

pp

get lost in piano  
↓ cresc.

♩ = 60

NV

Intense Release precisely at  
↓ violin entry

tr

non dim.

ff

ss

14

6

3

mp subito

don't rush silence

string chatter

2/4

2/4

6/4

2/4

4/4

3/4

2/4

26

♩ = 50

tr

yib.

sempre pp

ff

pp

33

3

3

3

3

mp

mp

41

5

3

mf

f

p

mp

p

pp

50

3

5

3

p

mp (more)

pp

p

mf

58

tr

5

3

3

mp

p

p

mf

p

p

mp

©1995 RICHARD FELCIANO



